



May 27, 2025  
Keio University

## Keio University Art Center Exhibition

### *Live with the Times and Beyond Them: The Gaze of Reiji Kawaguchi* (June 9–August 8, 2025)

Visit the Keio University Art Center for a rare chance to view a private collection of prewar Japanese artworks centered around the prints of Yoshio Fujimaki and other international pieces of Modern art that would have been lost to history were it not for one man. The title of this exhibition, *Live with the Times and Beyond Them*, is based on a message that Fujimaki himself wrote. We hope that you will enjoy this collection put together under the watchful eye of the once-in-a-generation collector that was Reiji Kawaguchi.

#### 1. Exhibition Details

Dates: June 9 (Mon) – August 8 (Fri), 2025

Closed: Weekends and public holidays, July 7 (Mon), July 8 (Tue) and July 28 (Mon)

Special openings: July 5 (Sat) and July 26 (Sat)

\*The displayed works will be changed on a rotating basis throughout the exhibition.

First cycle: June 9 (Mon) to July 5 (Sat)

Second cycle: July 9 (Wed) to August 8 (Fri)

Exhibition hours: 11:00–18:00

Venue: Keio University Art Center 1F Art Space of South Annex, Mita Campus

Entrance fee: Free of charge

Hosted by: Keio University Art Center (KUAC)

Website: <http://www.art-c.keio.ac.jp/en/news-events/event-archive/ikigoe/>

\*For the latest information, please check the exhibition website linked above.

#### 2. Exhibition Overview

The Keio University Art Center is pleased to present an exhibition of a private art collection that features both prewar Japanese artworks, mainly created by Yoshio Fujimaki, and exquisite pieces of Modern art from overseas.

This exhibition begs the question: how deeply can one gaze at a piece of art? "The extraordinary collector who curated these pieces, Reiji Kawaguchi, would not settle for "looking" at art pieces, but gazing into their very souls. When he pondered a piece of art, he seemed to confront its very being, diving into the depths within. This collection, then,

is the culmination of pieces he pierced with his gaze. Yoshio Fujimaki, an artist who stood at the receiving end of this stare, once said, “Live in the times; live beyond the times.” Kawaguchi, as a collector, was sensitized to works that lived in, yet transcended their times, only selecting those that could withstand his ever-seeking gaze. What does this collection, painstakingly put together by Kawaguchi’s ongoing dialogue with the pieces, have to say to us today? We hope that you will come by to find out.

This exhibition has been split into two cycles, the first of which (June 9–July 5) will primarily feature Yoshio Fujimaki, Yasunori Taninaka, and other prewar Japanese artists, and the second of which (July 9–August 8) will focus on pieces of Modern art by Blinky Palermo, Ana Mendieta, and other international artists.

#### First cycle:

The first part of the exhibition will highlight an artist who captured Kawaguchi’s imagination and the inspiration behind the name for this exhibition, Yoshio Fujimaki. Visitors will have the opportunity to enjoy Fujimaki’s captivating prints and conversations on the nature of authenticity. Likewise, the exhibition will dive into the prints of Yasunori Taninaka, a revealing portrait by Shizue Hayashi, drawings by Toshiyuki Hasegawa, and other pieces that are immersed in the lives and experiences of their times.

#### Second cycle:

The second part of the exhibition will begin with pieces by Antoni Tàpies that were added early on in the history of the collection, followed by drawings by Blinky Palermo that almost look like carvings, Ana Mendieta’s leaf engravings, footprints of Stanley BrouwnStanley Brown, drawings of hatched and curved curves lines by Hanne Darboven that depict the realities of daily life, and a lineup of other pieces that beg their audience to ask questions.

### 3. List of Artists

Yoshio Fujimaki (1911–c. 1935)  
Yasunori Taninaka (1897–1946)  
Umetaro Azechi (1902–1999)  
Toshiyuki Hasegawa (1891–1940)  
Shizue Hayashi (1895–1945)  
Tetsugoro Yorozu (1885–1927)  
Kotaro Migishi (1903–1934)  
Antoni Tàpies (1923–2012)  
Stanley Brouwn (1935–2017)  
Imi Knoebel (1940–)  
Hanne Darboven (1941–2009)  
Blinky Palermo (1943–1977)  
Ana Mendieta (1948–1985)

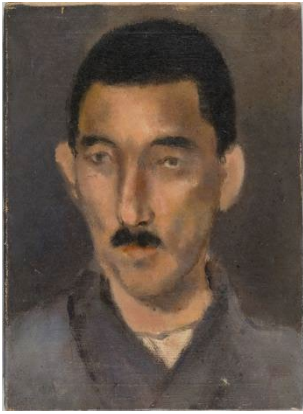
#### 4. Press Images and Works To Be Exhibited

- a. Shizue Hayashi, *Portrait of Mr. Kang*
- b. Yasunori Taninaka, *Man Exhaling Butterfly*
- c. Yoshio Fujimaki, *Echo*
- d. Yoshio Fujimaki, *The Iron Bridge*
- e. Yoshio Fujimaki, *Gathering*
- f. Ana Mendieta, *Untitled*
- g. Hanne Darboven, *Untitled*
- h. Blinky Palermo, *Untitled*
- i. Blinky Palermo, *Untitled*

\*Courtesy of the Keio University Art Center / Photos by Katsura Muramatsu (Calo works Co. Ltd.)

\*Please be aware that the actual exhibited items may differ from those pictured here.

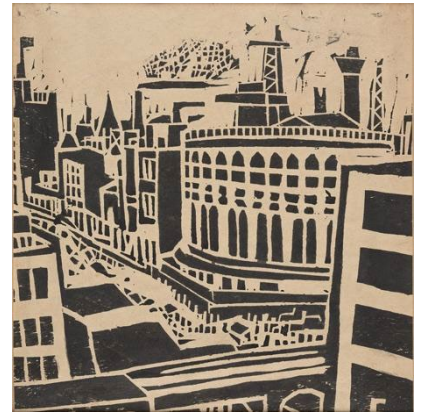
\*Please give credit when using images.



a.



b.



c.



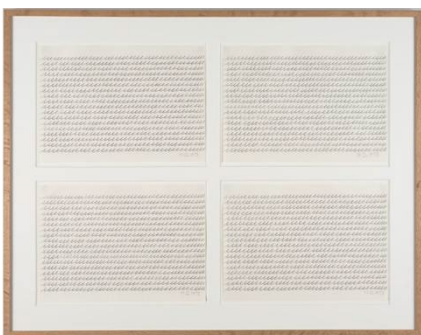
d.



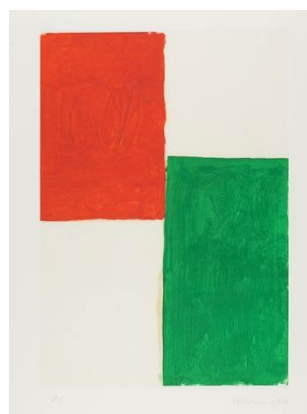
e.



f.



g.



h.



i.

## 5. Related Events

### Lecture

Date: Saturday, July 5, 2025

Speaker: Yoshihisa Otani (of the former Kanransha Gallery)

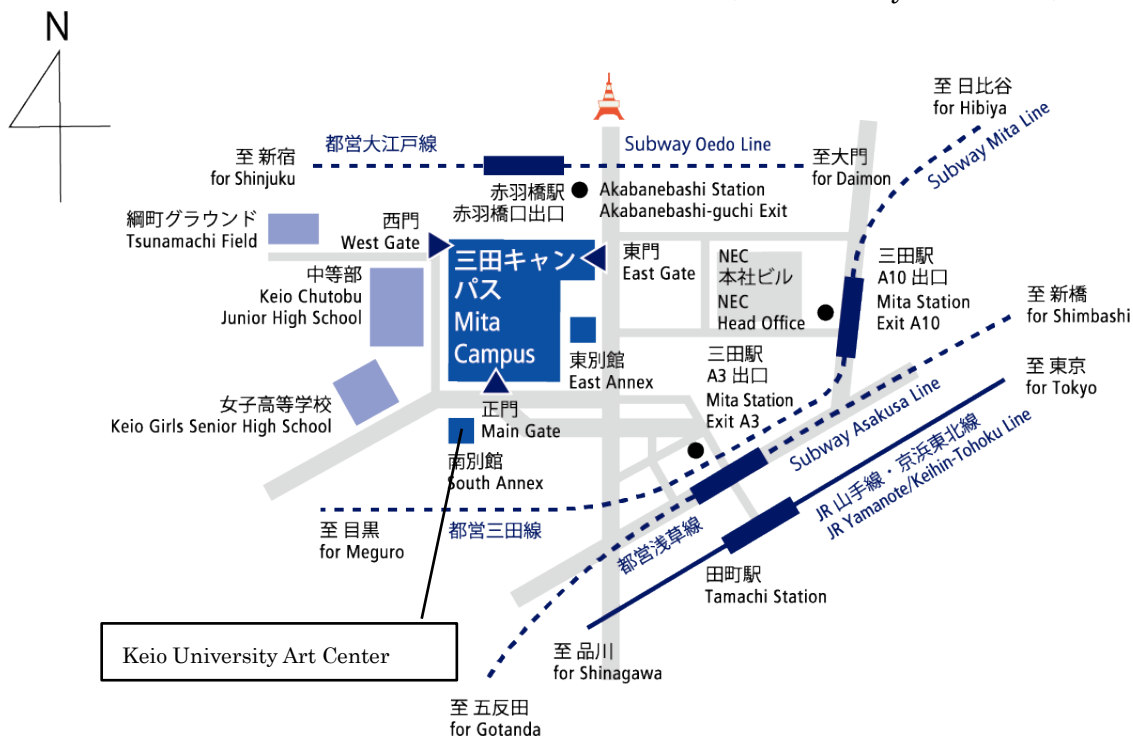
## 6. Venue Access

Venue: Keio University Art Center 1F Art Space of South Annex, Mita Campus

Address: 2-15-45 Mita, Minato-ku, Tokyo, 108-8345

Access: 8-minute walk from Tamachi Station (JR Yamanote Line/JR Keihin-Tohoku Line) 7-minute walk from Mita Station (Toei Subway Asakusa Line/Mita Line)

8-minute walk from Akabanebashi Station (Toei Subway Oedo Line)



\*Please direct any requests or inquiries to the contacts listed below in advance of any press coverage.

\*We have sent this news release to the MEXT Press Club and the cultural news departments of other media outlets.

---

Inquiries regarding this press release:

Keio University Office of Communications and Public Relations (Contact: Teranishi(Ms.))

Tel: 03-5427-1541

Fax: 03-5441-7640

Email: [m-pr@adst.keio.ac.jp](mailto:m-pr@adst.keio.ac.jp)

<https://www.keio.ac.jp/en/>

---