



KeMCo New Year Exhibition 2026 Where the Horses Are (January 8 – February 7)

The Chinese zodiac sign for 2026 is the horse. Throughout history, horses, valued for their strength and beauty, have aided the development of human civilization in countless ways—facilitating travel, transport, hunting, farming, and even entertainment. To celebrate the new year, this exhibition will showcase a wide range of works involving horses from Keio's collections, including rare books, picture scrolls, *ukiyo-e* prints, and *haniwa* figures. KeMCo invites visitors to learn about the longstanding relationship between people and horses and renew their appreciation for these incredible animals.

In addition to the main exhibit, a special corner will be dedicated to original cover artwork for *Ko'uma*, a magazine published at Keio Yochisha Elementary School that is created by artists connected to Keio.

1. Overview

Date: January 8 (Thu.) – February 7 (Sat.), 2026 *Closed on Saturdays, Sundays, and public holidays

Weekend openings: January 10 (Sat.), 24 (Sat.), February 7 (Sat.)

Weekday closures: January 26 (Mon.)

Venue: Keio Museum Commons (Mita Campus East Annex)

Open: 11:00–18:00

Admission: There is no ticket fee or need to book visits in advance.

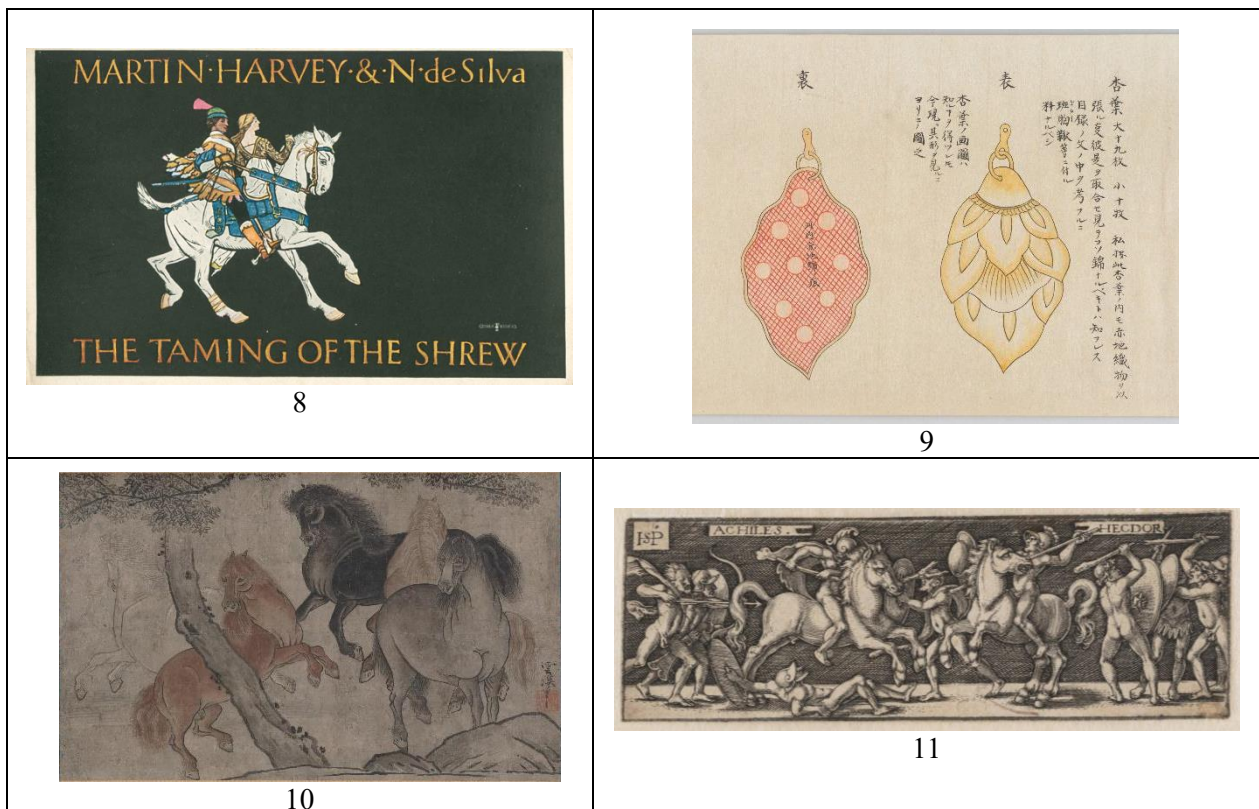
*Please check the KeMCo website for the latest information: <https://kemco.keio.ac.jp/en/all-post/20260108-en/>

2. Exhibition Highlights

1. *Polygraphie*, by Johannes Trithemius, 1561, Keio University Library
2. *Book of Hours* (in Latin), c.1480, Western Medieval Manuscripts Collection, Keio University Library
3. *Nijūbashi Bronze Statue, Nankō*, illustrated by YŌSAI Nobukazu, 1899, George S. Bonn Collection of Meiji-period *ukiyo-e*, Keio University Library
4. *Horse (Haniwa tomb sculpture)*, late Kofun period, Department of Archaeology and Ethnology, Keio University Faculty of Letters
5. Stage photograph from *Gibasan (Twenty-Seven Nights for the Four Seasons)*, photographed by Makoto Onozuka, private collection
6. *Ko'uma*, Keio Yochisha Elementary School, photographed by Katsura Muramatsu, Calo works Co., Ltd.
7. *Ko'uma*, by Tarō Okamoto, 1965, Keio Yochisha Elementary School
8. *The Taming of the Shrew*, featuring Martin Harvey and N. de Silva, Prince of Wales Theatre, Kaoru Osanai's Theater Picture-Postcard Collection, Keio University Library
9. *Kumano Shingū Sacred Treasure Drawing*, compiled by UJITA Tadasato, 1794, Century Akao Collection, Keio University
10. *Gunbazu (Horses)*, painted by UNKEI Eii, Muromachi period, Tokiwayama Bunko Foundation (in the care of Keio University)

11. *Achilles and Hector*, by Hans Sebald Beham, c.1518–1530, Keio University





3. Related Event

Gallery Talk:

The talk will be conducted in Japanese with no interpretation available. Admission is free, but advance reservation is required. The reservation window will close when registrations reach capacity.

Date: January 10 (Sat.), 2026

Time: 14:00–14:40

Capacity: around 25 participants

*Details about the application deadline and how to register will be announced on the KeMCo website.

<https://kemco.keio.ac.jp/en/all-post/20260108-en/>

4. Venue and Access

Venue: Keio Museum Commons (East Annex)

Address: 2-15-45 Mita, Minato-ku, Tokyo 108-8345

East Annex, Keio University Mita Campus

Access:

- Tamachi Station (JR Yamanote Line/Keihin Tohoku Line): 8-minute walk
- Mita Station (Toei Subway Asakusa Line/Mita Line): 7-minute walk
- Akabanebashi Station (Toei Subway Oedo Line): 8-minute walk



Keio Museum Commons
(East Annex, Mita Campus)

5. Organizers

Organized by: Keio Museum Commons

With cooperation from:

Keio University Art Center

Center for Kampo Medicine, Keio University School of Medicine

Shinanomachi Media Center (Keio University Library)

Hiyoshi Media Center (Keio University Library)

Historical Documents Room, Keio University Faculty of Letters (*Komonjoshitsu*)

Department of Aesthetics and Science of Arts, Keio University Faculty of Letters

Department of Archaeology and Ethnology, Keio University Faculty of Letters

Keio Institute of Oriental Classics (*Shido Bunko*)

Mita Media Center (Keio University Library)

Fukuzawa Memorial Center for Modern Japanese Studies, Keio University

Keio Yochisha Elementary School

(Updated December 10, 2025)

*Please direct any requests or inquiries to the contact information provided below.

Inquiries about press release:

Keio University Office of Communications and Public Relations (Teranishi(Ms.))

Tel: +81-3-5427-1541

Email: m-pr@adst.keio.ac.jp <https://www.keio.ac.jp/en/>