

January 29, 2025
Keio University

Keio Museum Commons New Exhibition Series
point of view — Kazuo Okazaki
(January 9 – February 7)

Keio University Museum Commons (KeMCo) is launching a new exhibition series titled “point of view,” which showcases a rotating series of artworks, academic research materials, and various objects in a single display base. This small series is a new attempt to highlight the university's collection and academic resources in a way that differs from regular exhibitions at KeMCo.

The first exhibition in this series features Kazuo Okazaki's artworks, “Gyobutsu Hoi” (object supplément). We invite you to enjoy unique encounters with objects discovered in the daily life of KeMCo.

1. Overview

Date: This first exhibition in this series will be broken up into four parts to coincide with the regular exhibitions scheduled at KeMCo in 2025.

1st part: January 9 (Thu.) to February 7 (Fri.) 2025

[Closed on weekends and public holidays]

*Open on January 18 (Sat.) & February 1 (Sat.)

**Closed on January 20 (Mon.) & February 3 (Mon.)

[Upcoming dates]

2nd part: March 17 (Mon.) to May 16 (Fri.) 2025

3rd part: June 3 (Tue.) to August 6 (Wed.) 2025

4th part: October to December (Dates to be confirmed)

Venue: Keio Museum Commons, East Annex Stair Landing, Keio University Mita Campus

Opening Times: 11:00–18:00

Admission is free and bookings are not required.

*Please check our website for the latest information (<https://kemco.keio.ac.jp/all-post/20241219-en>)

2. Exhibition Highlights

Keio Museum Commons (KeMCo) introduces a new exhibition series titled “point of view”. This project sheds light on the university’s collections, artworks, and academic artifacts, which often cannot be fully explored in the traditional gallery setting.

The venue is the airy stair landing that opens to an outdoor view. The exhibition “point of view” refers to the objects displayed on the landing and the expansive KeMCo atrium space that encompasses them. The objects you encounter on the display base might range from artworks to academic research materials and everyday tools. We invite you to enjoy these unexpected encounters with objects while spending time in this unique space at KeMCo.

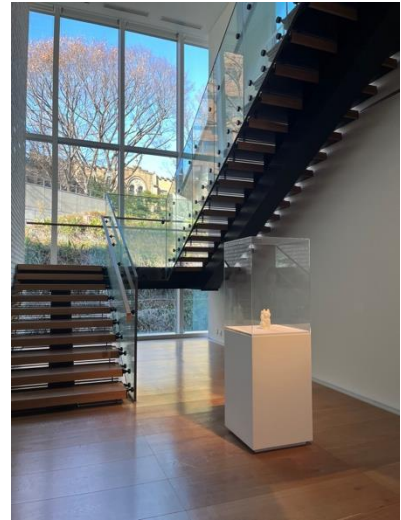
The first exhibition in the series presents “Gyobutsu Hoi” (object supplément) by contemporary artist Kazuo Okazaki who has been known for his work on objects since the 1960s.

Okazaki's creations will be showcased in four phases throughout 2025, aligning with KeMCo's exhibitions over the year.

Kazuo Okazaki (1930–2022)

Born in Okayama City, Okazaki studied art history at Waseda University and began his career in 1958 at the Yomiuri Independent Exhibition. His early works explored interiority, questioning the boundaries between exterior and interior, illusion and reality, later broadening to themes of human existence. In 1963, he established the concept of “Gyobutsu Hoi” (object supplément), a philosophy of perceiving the whole through its parts.

Okazaki has held numerous solo exhibitions at numerous major museums, including Kurashiki City Art Museum (1997), Nagi MOCA (2001), The Museum of Modern Art, Kamakura (2010), Chiba City Museum of Art (2016), and Kitakyushu Municipal Museum of Art (2016–17).



3. Venue and Access

Venue: Keio Museum Commons (KeMCo)

Address: 2-15-45 Mita, Minato-ku, Tokyo 108-8345
East Annex, Keio University Mita Campus

- Access:**
- Tamachi Station (JR Yamanote Line / Keihin Tohoku Line) 8 minutes on foot
 - Mita Station (Toei Subway Asakusa Line / Mita Line) 7 minutes on foot
 - Akabanebashi Station (Toei Subway Oedo Line) 8 minutes on foot



4. Organizers

Organized by: Keio Museum Commons, YOKOTA TOKYO

With cooperation from: Japan Cultural Research Institute

*Please direct any requests or inquires to the contact below.

Inquiries about press release:

Keio University Office of Communications and Public Relations (Please direct all communication to Ms. Teranishi)

Tel: +81-3-5427-1541

Email: m-pr@adst.keio.ac.jp

URL: <https://www.keio.ac.jp/en/>