

June 14, 2023
Keio University

Fukuzawa Yukichi Memorial Keio History Museum
2023 Spring Special Exhibition
“Sone & Chujo, Architects and Keio University Part I: Meiji and Taisho Era”

Figures and Ideas Linked to Fukuzawa Yukichi and Josiah Conder

The Sone & Chujo, Architects—a private architectural design firm established in 1908 by Sone Tatsuzo and Chujo Seiichiro, and regarded as one of the biggest and best private design firms before World War II—has worked on more than 30 buildings for Keio University, seven of which are still standing today. The firm was also responsible for designing the Shinanomachi and Hiyoshi campuses.

How did the Sone & Chujo, Architects and Keio’s 30-year relationship come about, and what was the secret to its longevity? This exhibition features items that engage this question, focusing on newly discovered original designs and drawings, tracing the personal networks and ideological similarities that linked the two partners.

1. Basic overview

Dates: June 27(Tue.) – September 2(Sat.), 2023

Closed Sundays, Holidays, and August 9–16 for Summer Break

*The 2023 Fall Special Exhibition, “Sone & Chujo, Architects and Keio University Part II: Showa Era”, is scheduled to be held from Thursday, October 19 to Saturday, December 16

Venue: Old University Library 2nd Floor, Temporary Exhibition Room, Keio History Museum

Open: 10:00–18:00

Admission: Open to all

Details: <https://history.keio.ac.jp/en/>

*The period the exhibition will be held may be subject to change according to the situation surrounding COVID-19 cases.

Please check the exhibition’s website for the latest information: <https://history.keio.ac.jp/en/>

2. Exhibition structure (spring exhibition)

1. Fukuzawa Yukichi, Kanasugi Daigoro, and Fujimoto Jukichi
2. Josiah Conder and Sone Tatsuzo
3. Establishment of the office and construction of the library
4. Construction of the Auditorium and school buildings on Mita Campus
5. Construction of School Buildings and the hospital on Yotsuya (now Shinanomachi) Campus

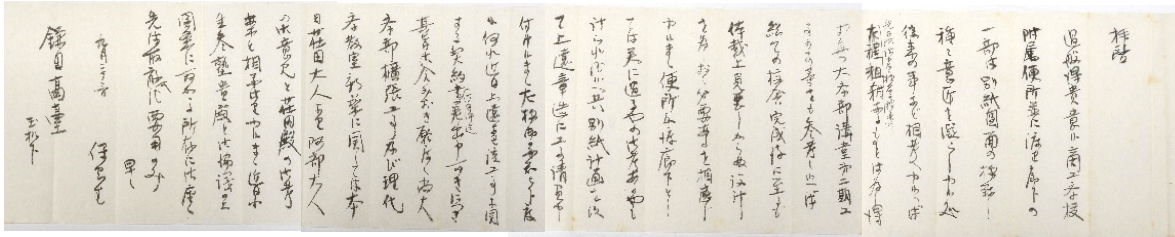
3. Featured items

1. Fukuzawa Yukichi manuscript entitled "Earthquakes are a great test of building methods" (dated October 31, 1891)
2. Yasuoka Katsuya, letter to Kamata Eikichi(dated September 23, 1905)
3. University Hospital: Elevation and cross-section view drawing of first examination area (dated July 26, 1919)
4. Jukukan-kyoku (Keio Corporate Administration): Layout of foundation-reinforcing steel bars (dated July 20, 1925)
5. University Hospital, West Ward: Drawing of lighting fixtures (dated September 6, 1932)
6. Yochisha Elementary School Building: Detailed schematics of columns for awning installation and flower bed for the third floor, and terrace partition for the second floor(dated June 2, 1936)

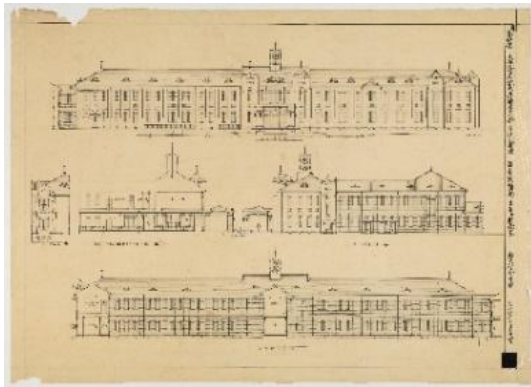
(1 and 2 are from the Collection of the Fukuzawa Memorial Center for Modern Japanese Studies, and 3–6 are stored by the Office of Facilities and Property Management at the Keio Corporate Administration)



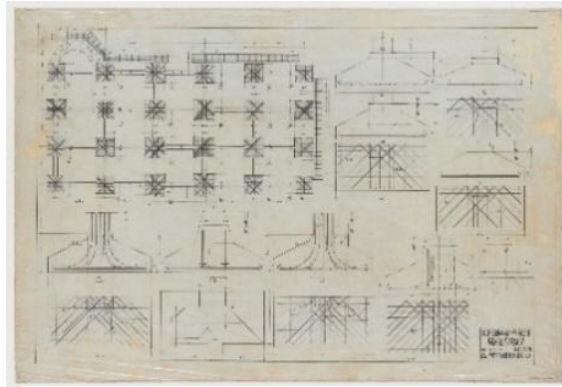
1. Fukuzawa Yukichi manuscript entitled "Earthquakes are a great test of building methods" (dated October 31, 1894)



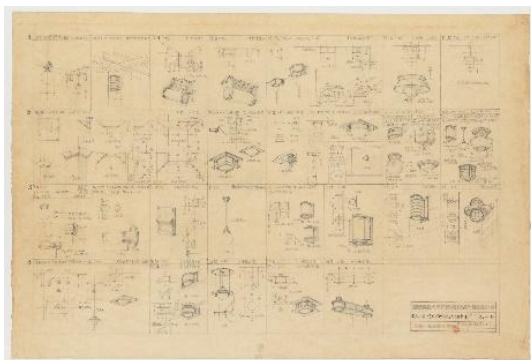
2. Yasuoka Katsuya, letter to Kamata Eikichi (dated September 23, 1905)



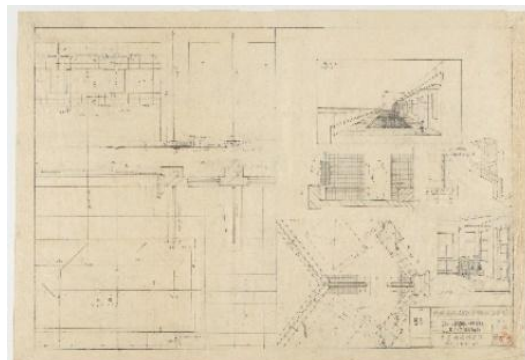
3. University Hospital: Elevation and cross-section view drawing of first examination area (dated July 26, 1919)



4. Jukukan-kyoku (Keio Corporate Administration): Layout of foundation-reinforcing steel bars (dated July 20, 1925)



5. University Hospital, West Ward: Drawing of lighting fixtures (dated September 6, 1932)



6. Yochisha Elementary School Building: Detailed schematics of columns for awning installation and flower bed for the third floor, and terrace partition for the second floor (dated June 2, 1936)

4. Related Events

i) Lecture: “Keio and Historical Architecture”

Date & Time: 13:00–15:00, Saturday, July 22

Lecturer: Professor Emeritus Fujimori Terunobu, The University of Tokyo

Guest: Ms. Hirai Yuka (fourth-generation descendent of Sone Tatsuzo)

Venue: Room 121, First School Building on Keio University Mita Campus

Admission: those interested should come directly to the venue. (Limited to the first 300 entrants)

ii) Mita Campus Architectural Tour (must reserve spot in advance)

Date & Time: 11:00–12:30, 14:00–15:30, Saturday, July 8

Location: Keio University Mita Campus

Old University Library, *Jukukan-kyoku* (Keio Corporate Administration), First School Building, Public Speaking Hall (*Mita Enzetsu-kan*), and more

Reservations: Please apply to reserve a spot through the exhibition’s homepage. (Both tours limited to 15 people)

iii) Gallery talk by exhibition organizer

Date & Time: 10:30 a.m. on July 18 (Tues.) and July 31 (Mon).

Venues: University Library (Old Building) Exhibition Room

How to attend: Available to the first 15 people who ask at the exhibition’s reception counter.

Reception opens at 10:00 a.m. on eligible days.

5. Venue Access

Venue: Fukuzawa Yukichi Memorial Keio History Museum

(“⑪” on the map provided below on the 2nd floor of the Old University Library)

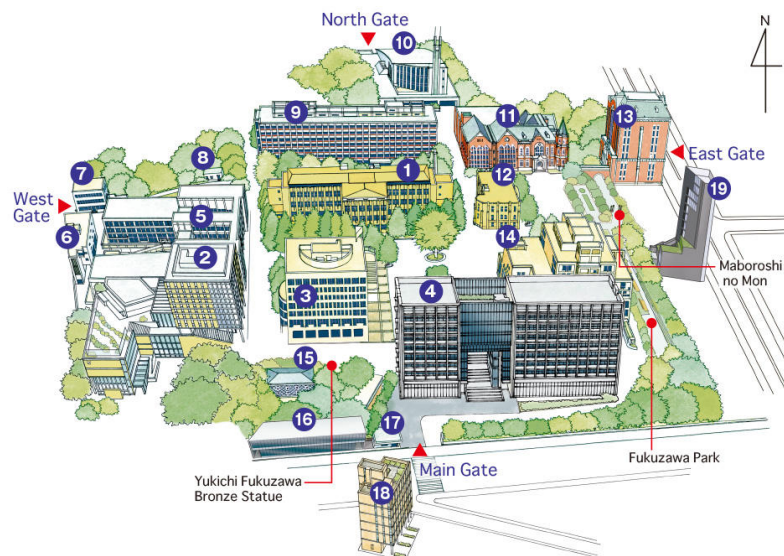
Address: 2-15-45 Mita, Minato-ku, Tokyo, 108-8345

Keio University Library Old Building 2F on Keio University Mita Campus

Access: 8-minute walk from Tamachi Station (JR Yamanote Line/JR Keihin-Tohoku Line)

7-minute walk from Mita Station (Toei Subway Asakusa Line/Mita Line)

8-minute walk from Akabanebashi Station (Toei Subway Oedo Line)



*Please direct any requests or inquiries to the contacts listed below in advance of any press coverage. . . .

Inquiries regarding this press release:

Keio University Office of Communications and Public Relations (Toyoda)

Tel: +81 3-5427-1541 Fax: +81 3-5441-7640

Email: m-pr@adst.keio.ac.jp

<https://www.keio.ac.jp/en/>