

October 18, 2023
Keio University

**Fukuzawa Yukichi Memorial Keio History Museum
2023 Fall Special Exhibition
“Sone & Chujo, Architects and Keio University Part II : Showa Era”**

Architecture and thoughts passed down through earthquake reconstruction and war damage
The Sone&Chujo Architects—a private architectural design firm established in 1908 by Sone Tatsuzo and Chujo Seiichiro, and regarded as one of the best private design firms before World War II—has worked on more than thirty buildings for Keio University, seven of which are still standing today.

This exhibition’s Showa Era chapter traces the diverse works of the firm, from Gothic to modernism architecture, including the grand design of the Mita Campus and the then-newly established Hiyoshi Campus, as well as the Yochisha Primary School building, during the period of earthquake reconstruction, and looks back on the relationship between Keio and the architecture firm that continued until the latter’s closing in 1937.

1. Basic Overview

Dates: October 19(Thu.) -December 16(Sat), 2023

Closed Sundays and Holidays.

*The exhibition will be open on Thursday, November 23 and Sunday, November 26 in conjunction with the Mita Festival. It will be closed on Monday, November 27.

Venue: Old University Library 2nd Floor, Temporary Exhibition Room, Keio History Museum

Open: 10:00–18:00

Admission: Open to all

Details: <https://history.keio.ac.jp/en/>

*The period the exhibition will be held may be subject to change according to the situation surrounding COVID-19 cases.

Please check the exhibition’s website for the latest information: <https://history.keio.ac.jp/en/>

2. Exhibition Structure (Fall Exhibition)

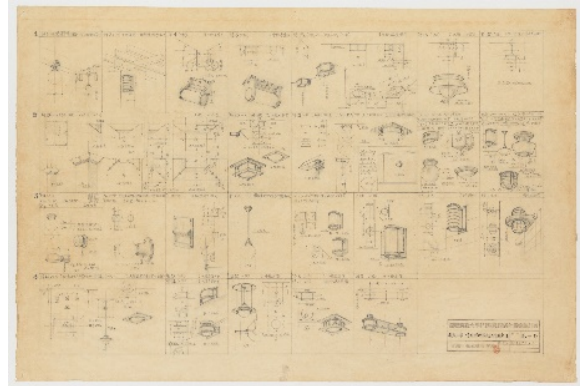
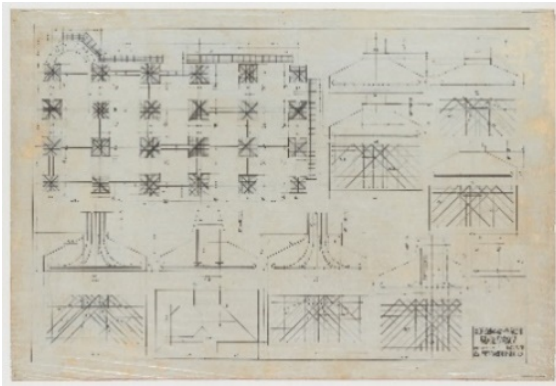
1. Recovery after the Great Kanto Earthquake
2. Hiyoshi Campus Opening
3. Reorganization of the Mita School Buildings and Yochisha Primary School Building
4. Office Closing and War
5. Architectural Legacy Passed Down through Time

3. Featured Items

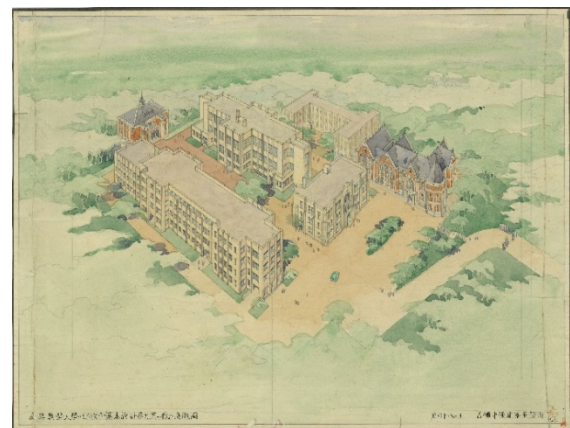
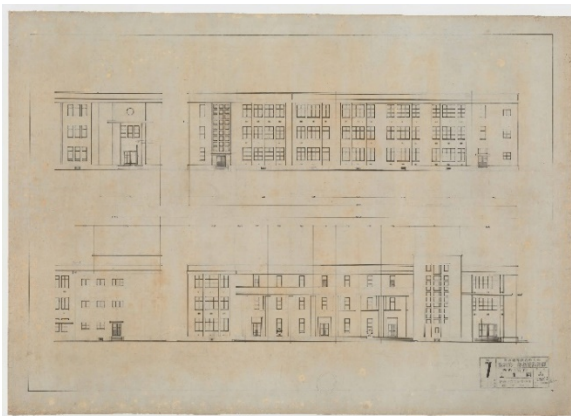
1. Jukukan-kyoku (Keio Corporate Administration): Layout of foundation-reinforcing steel bars (dated July 20, 1925)
2. Faculty of Medicine Hospital, West Ward: Drawing of lighting fixtures (September 6, 1932)
3. First section of the University Preparatory course building: Front view (September 27, 1932)
4. Layout plan of the Mita faculty buildings, March 1936

- 5. Yochisha Primary School building: Detailed schematics for third-floor pipe columns for canopy and flower bed, and second-floor partition (June 2, 1936)
- 6. University auditorium reconstruction: Exterior perspective view (November 15, 1953)

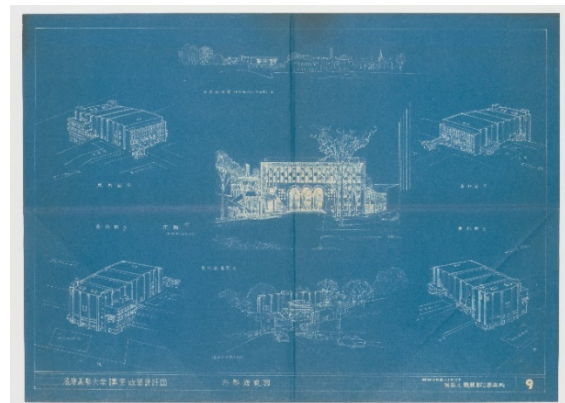
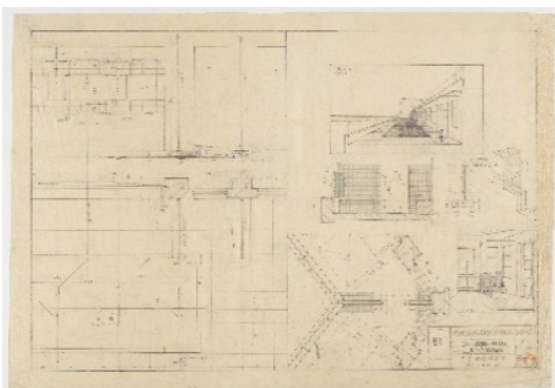
(Items 1–6 except 4 are from the collection of the Office of Facilities and Property Management at the Keio Corporate Administration. Item 4 is from the collection of the Fukuzawa Memorial Center for Modern Japanese Studies)



- 1. (Left) *Jukukan-kyoku* (Keio Corporate Administration): Layout of foundation-reinforcing steel bars
- 2. (Right) Faculty of Medicine Hospital, West Ward: Drawing of lighting fixtures



- 3. (Left) First section of the University Preparatory course building: Front view
- 4. (Right) Layout plan of the Mita faculty buildings



- 5. (Left) Yochisha Primary School building: Detailed schematics for third-floor pipe columns for canopy and flower bed, and second-floor partition
- 6. (Right) University auditorium reconstruction: Exterior perspective view

4. Related Events

(1) Lecture: On the Keio University Hiyoshi Campus

Date&Time: 13:00–15:00, Saturday, October 21

Lecturer: Koichi Yoshida (Professor Emeritus, Yokohama National University)

Interviewer: Takeshi Akuzawa (Principal, Keio Senior High School)

Venue: Hiyoshi Kyoiku Hall, Hiyoshi Kyoiku Building, Keio Senior High School

Reservations: Please apply to reserve a spot through the exhibition's homepage.
(Limited to the first 250 entrants)

Reservation period: Until noon on Wednesday, October 18

(2) Hiyoshi Campus Architectural Tour (must reserve spot in advance)

Time: 11:00–12:30 and 14:00–15:30, Saturday, November 4

Location: Keio University Hiyoshi Campus

First School Building (Keio Senior High School), YMCA Chapel, Kishukusha (exterior only), etc.

Reservations: Please apply to reserve a spot through the exhibition's homepage.
(Both tours limited to 15 people)

Reservation period: Tuesday, October 10–noon on Wednesday, October 25

(3) Gallery talk by exhibition organizer

Time: 10:30–11:30 on Tuesday, October 24 and Friday, November 10

Admission: Apply at the reception desk of the exhibition hall from 10:00 on the day of the event
(Limited to first 15 people)

5. Venue Access

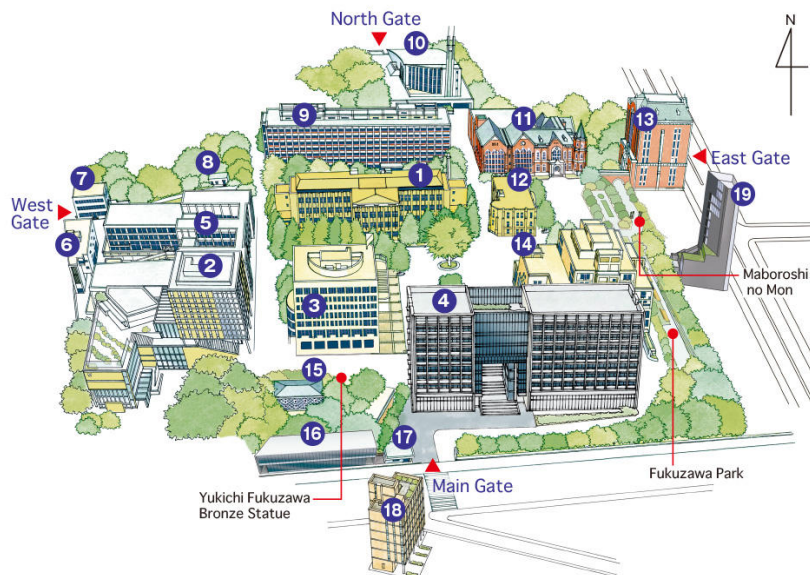
Venue: Fukuzawa Yukichi Memorial Keio History Museum (on the 2nd floor of the Old University Library marked ⑪ on the map below)

Address: 2-15-45 Mita, Minato-ku, Tokyo, 108-8345

Access: Tamachi Station (JR Yamanote Line/JR Keihin-Tohoku Line) 8-minute walk

Mita Station (Toei Subway Asakusa Line/Mita Line) 7-minute walk

Akabanebashi Station (Toei Subway Oedo Line) 8-minute walk



*Please direct any requests or inquiries to the contacts listed below in advance of any press coverage.

Inquiries regarding this press release:

Keio University Office of Communications and Public Relations (Contact: Toyoda)

Tel: +81 3-5427-1541

Fax: +81 3-5441-7640

Email: m-pr@adst.keio.ac.jp <https://www.keio.ac.jp/en>