

July 28, 2021
Keio University

**Collaborative Exhibition by 8 Departments on Mita Campus
Questioning the Way We Read and Understand Objects
"Eight Perspectives on Reading Objects" to Be Held
from August 16 to September 17**

Under the theme of "closely reading objects," an exhibition titled "Eight Perspectives on Reading Objects" will be held through a collaborative effort of 8 departments on Mita Campus.

Even when we look at the same object, everyone has a different way of reading and understanding it. In this exhibition, 16 objects from 8 departments involved in activities relating to cultural assets on Mita Campus will be exhibited. These objects, lined up in mysterious combinations, will question visitors on how they see objects as well as on their understandings of the relationships between them.

The exhibition will be held at the Keio Museum Commons (KeMCo), which opened in April. Please come and enjoy the participatory exhibition that will also be linked to our digital archives.

1. Basic information

- Date: August 16 (Mon.) – September 17 (Fri.), 2021
(closed on weekends and public holidays)
- Venue: Keio Museum Commons Exhibition Room (East Annex 3F, Mita Campus)
- Opening hours: 11:00–18:00
- Admission: advance reservation required (free admission)
- Details: <https://kemco.keio.ac.jp/en/all-post/20210713-en/>

※The number of visitors to the exhibition will be limited in accordance with the requirements for Tokyo Prefecture following the declaration of a state of emergency.

※The exhibition period, etc., may change depending on the situation regarding the spread of COVID-19 (coronavirus disease). Please check the KeMCo website (<https://kemco.keio.ac.jp/en/>) for the latest information.

2. Outline of exhibition

Even when looking at the same object, everyone has a different way of reading it. Copperplate prints of women full of allegory, dog bones from the Jomon period, picture diaries of a samurai from the Edo period, instruction manuals on dancing, albums of Japanese poetry on paper strips, multicolored battle scenes, beasts in pop-up books … the objects in this exhibition, with their mysterious combinations, pose riddles on how to read them. There is no single response to these riddles. Countless responses are produced by the overlapping perspectives presented by the 8 research fields and the thoughts of visitors to the exhibition.

At the venue, a worksheet unique to this exhibition will be available to help visitors take a closer look at the objects and understand the relationships that arise from their combinations. Using the worksheet as a guide, visitors can participate in the exhibition.

In Room 2, there will be a demonstration of the "Keio Object Hub," a portal site for introducing Keio's cultural assets, and we have also prepared contents that make use of digital technology to allow visitors to experience exhibited works from KeMCo's unique perspectives. Furthermore, we will also establish a small library with a view of historical buildings on Mita Campus from the terrace where visitors can deepen their knowledge by browsing research materials such as catalogs and reports related to the exhibited works.

3. Main exhibits



1.



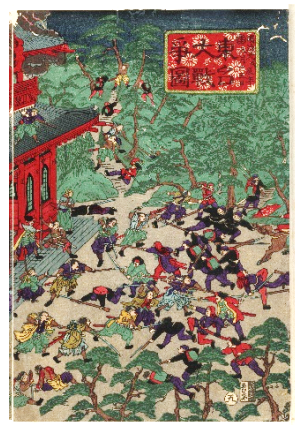
2.



3.



4.



5.



6.



7.

1. Keio University Art Center: Tatsumi Hijikata, Butoh Notation System *Nadare Ame* (*Avalanche Candy*), 1972

2. Historical Documents Room, Faculty of Letters (Komonjoshitsu): OZAKI Sekijo, *The Diary of OZAKI Sekijo*, 1861—62

3. Institute of Oriental Classics (Shido Bunko): *The Album of Old Poem Strips*, 14—17th century

4. Department of Aesthetics and Science of Arts, Faculty of Letters: Albrecht Dürer, *The Four Naked Women*, 1497
5. Fukuzawa Memorial Center for Modern Japanese Studies: Yoshitora Nagashima, *The Battle of Ueno on July 4, 1868*, ca.1874
6. Mita Media Center (Keio University Library): *Animals and Birds Imported by the Chinese and the Dutch*, 18—19th century
7. Department of Archaeology and Ethnology, Faculty of Letters: *The Oldest Dog Burial Remains in Japan*, Initial Jomon Period (ca.BC5500—5300)

4. Venue

Venue : Keio Museum Commons 3F Exhibition Room

Address: Keio University Mita Campus East Annex, 2-15-45 Mita, Minato-ku, Tokyo 108-8345
 (The entrance is located on Sakurada-dori; no access from inside Mita Campus)

Access : Tamachi Station (JR Yamanote Line/Keihin Tohoku Line) 8-minute walk
 Mita Station (Toei Subway Asakusa Line/Toei Subway Mita Line) 7-minute walk
 Akabanebashi Station (Toei Subway Oedo Line) 8-minute walk



5. Organizers and coordinator

Organizers: Keio University Art Center

Keio University Faculty of Letters, Historical Documents Room (Komonjoshitsu)

Keio Institute of Oriental Classics (Shido Bunko)

Keio University Faculty of Letters, Department of Aesthetics and Science of Arts

Fukuzawa Memorial Center for Modern Japanese Studies, Keio University

Keio Museum Commons

Keio University Libraries Mita Media Center

Faculty of Letters Department of Archaeology and Ethnology

Coordinator: Keio Museum Commons

※Please direct any requests or inquires to the contact information provided below in advance.

Inquiries about press release:

Keio University Office of Communications and Public Relations (Toyoda)

Tel: +81-3-5427-1541

E-mail: m-pr@adst.keio.ac.jp <https://www.keio.ac.jp/en/>