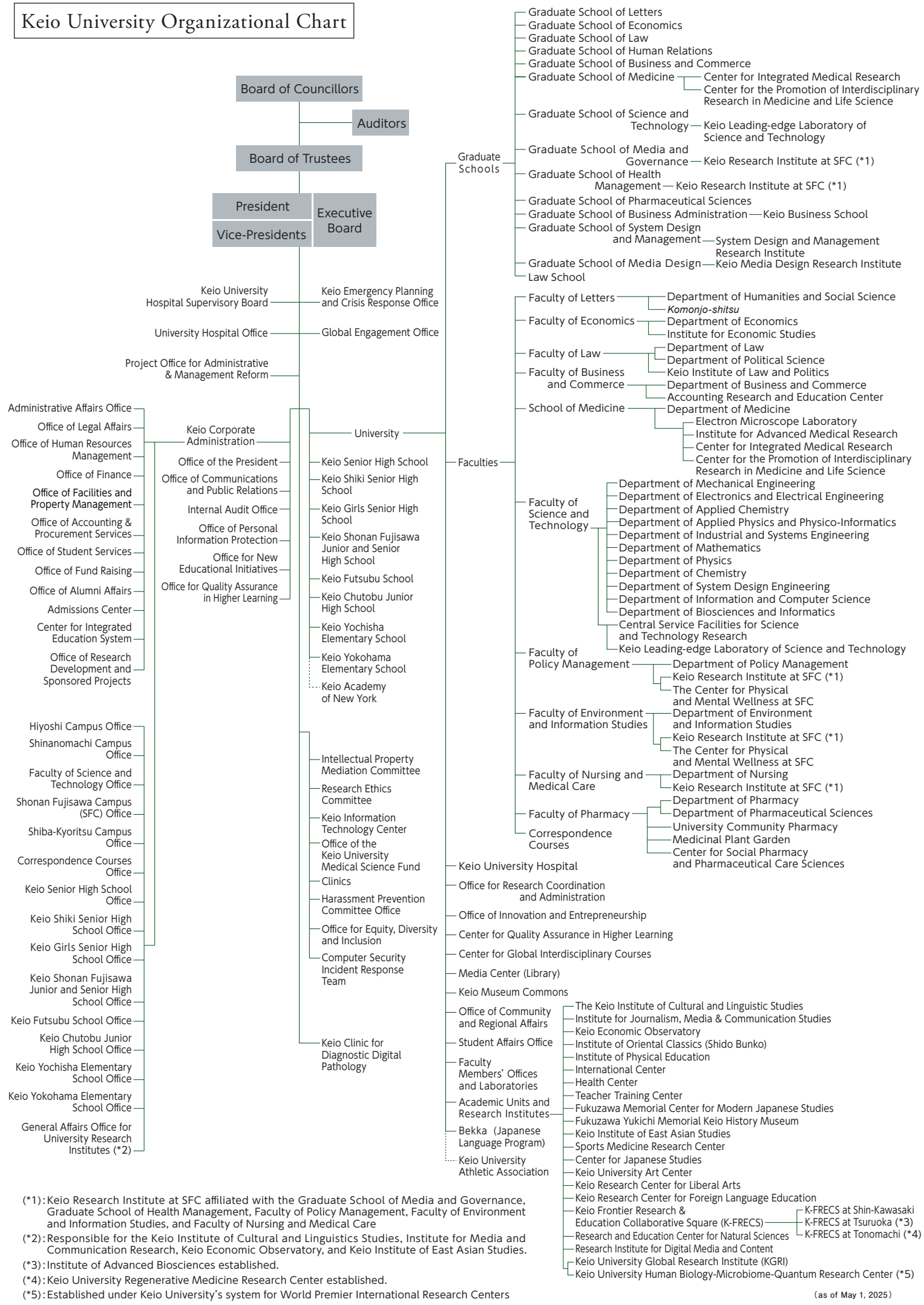


Keio University Organizational Chart



(\*1): Keio Research Institute at SFC affiliated with the Graduate School of Media and Governance, Graduate School of Health Management, Faculty of Policy Management, Faculty of Environment and Information Studies, and Faculty of Nursing and Medical Care

(\*2): Responsible for the Keio Institute of Cultural and Linguistics Studies, Institute for Media and Communication Research, Keio Economic Observatory, and Keio Institute of East Asian Studies.

(\*3): Institute of Advanced Biosciences established.

(\*4): Keio University Regenerative Medicine Research Center established.

(\*5): Established under Keio University's system for World Premier International Research Centers

(as of May 1, 2025)