

July 2025

Notice for New PEARL Students of Foreign Nationality -Scholarships and Preparation for Beginning Student Life-

Submission of Required Documents & Distribution of Student ID card

Please submit a copy of your residence card and student information card when you receive your student ID card on the following date.

Date: **September 24, 2025 9:00–10:00**

Place: Classroom D202 in the Independence Wing (Dokuristukan) of the Fourth Building

Thing to bring: ***Copy of your residence card**

You will receive your residence card when you arrive in Japan.

- Please submit a two-sided copy of your residence card and make sure that the 12-digit residence card number is clearly visible.
- Please register your residence at your local city/ward office within 14 days of moving to the new residence.

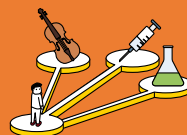
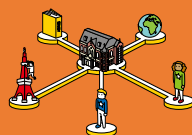
Click the image for the sample of the copy!

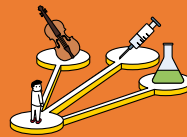
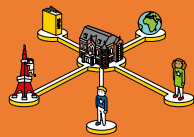


***Student information card (Emergency contact sheet)**

-Please fill out both front and back. Make sure to attach a photo to the front.

If you have any question about the student information card, please contact us at the following email. hiyoshi.gakusei@info.keio.ac.jp





MUST READ!

Scholarship Orientation

Application documents cannot be completed in a single day.
Prepare now, not later!

International students who wish to apply for scholarships through Keio University must complete the **Scholarship Registration** at the beginning of every semester.

Please check out the following video for **the First Step of Scholarship Registration**.

Video①: **Scholarship Orientation—Don't Delay, Prepare Now!**

①



Please read **details** the following website and **start to prepare documents right now**.

URL②: **<https://www.ic.keio.ac.jp/en/life/scholarship/application.html>**

②



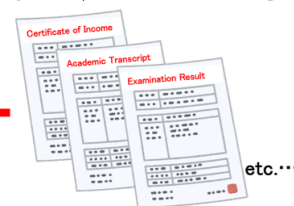
You cannot apply for any scholarships through Keio without completing this **Scholarship Registration**.

The application documents for the Scholarship Registration are very important **as they are used in the selection process and are related to the scholarship disbursement, so they must be filled out accurately.**

[Prescribed form (at least 6 pages in total)]



[Other required document/ certificate]



Those who plan to apply for "JASSO" must complete this **Scholarship Registration**.

Life Orientation

This orientation is designed for international students who hold a residence status (visa) of "student" or those who will apply for a student visa. It covers the following important information for international students studying at Keio University:

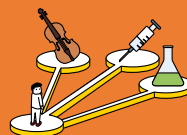
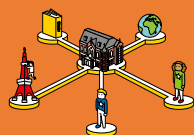
- **Mandatory Procedures**
- How to maintain your status of residence
- National Health Insurance (NHI)

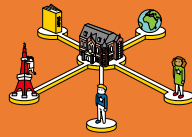
③



Please check out the following video to complete **Mandatory Procedures!**

Video③: **Life Orientation—Critical Tasks You Can't Skip!**





MUST READ!

Pre Departure Guide for Starting Student Life at Keio University

This guide contains essential information to support you as you prepare for your move to Japan.

Please read it thoroughly so that you can settle into your new life in Japan as smoothly as possible. The guide is organized chronologically, from preparations in your home country to settling in after your arrival in Japan.

The guide includes:

- Information Resource for international Students
- Visa Application
- Things to Do Before Leaving Your Home Country
- Before Departure
- After Landing
- Soon After Finding the Place You Live (Mandatory)
- Set up Living Environment
- Starting Campus Life

④



Link④: https://drive.google.com/file/d/1D_RCsgkeGiefefs58uewiLwF9KdLIQse/view?usp=sharing

General Information for PEARL International Students

Please check the following websites for the latest information.

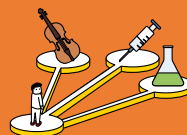
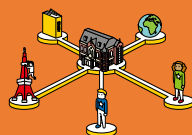
Please check this website for **upcoming updates**.

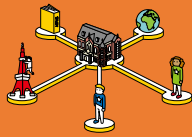
⑤



Keio International Center Website:

URL⑤: <https://www.ic.keio.ac.jp/en/international undergraduate student at hiyoshi full-time degree student.html>





Visa and Entry to Japan

Please follow the instructions from the International Division of the Admission Center to obtain a visa and enter Japan.

Whenever new government policies are announced in regarding new entrants to Japan, we will update the following website with the latest information.

URL⑥: https://www.ic.keio.ac.jp/en/life/visa/new_entry_to_japan.html

⑥

-Contact Information-

Until September 21 (Sun.)

Admissions Center (direct inquiries to the International Division)

pearl_admissions@info.keio.ac.jp

From September 22 (Mon.)

International section of Hiyoshi Office of Student Services

hiyoshi_ic@info.keio.ac.jp



We look forward to meeting you soon!

International section of Hiyoshi Office of Student Services

E-mail: hiyoshi_ic@info.keio.ac.jp

